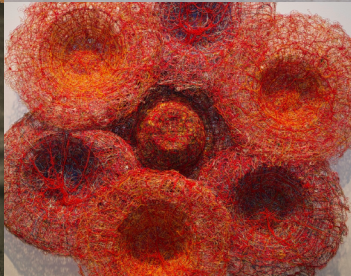


INTER | SECTIONALITY: DIASPORA ART FROM THE CREOLE CITY



Activity Guide

Use this activity guide to enhance your experience in the Inter|Sectionality exhibit and learn about yourself along the way.

IN A MATERIAL WORLD

An artist's choice of materials directly influences how they tell a story and how the artwork is received. Choose at least one piece in this exhibit and take note of the materials used to create it.

- How does it look?
- What color is it?
- Texture?
- Size?
- What do you think the materials represent?
- What do they add to this piece?
- How would the artwork be different without these materials?

Name of the artwork: _____

Name of the artist: _____

Notes on the materials used:

THIS PIECE MAKES ME FEEL...

Art has the power to evoke many emotions. As you make your way through the exhibit, choose the artwork that best matches each emotion listed below, and write the artist's name and title piece next to that emotion.

Excited _____

Sad _____

Happy _____

Angry _____

Proud _____

Afraid _____

Hopeful _____

Draw a picture that illustrates your emotions right at this moment.

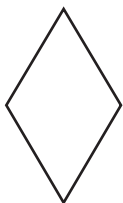
TAKING SHAPE

Shapes are a major part of expression in art. Search for pieces in this exhibit that use the following shapes in creative and unusual ways. Next to the shapes below, write the artist's name and name of the piece that uniquely incorporates the shape, and note where you see it on that piece.









RIDDLE POEMS

Use the clues in the following poems to determine which piece in this exhibit each poem is describing. **Answers are on page 11.**

1. Neon and black

Placed quietly in the back
For a message of reflection
That requires introspection

With sand that turns
A luminescent green
Even though I'm tucked away
You can't miss me once I'm seen

Your Answer: _____

2. Golden lavish drapes

Behind a framed image
You can see their head's shape
But you can't see their visage

With chains appearing
To be dripping with gold
The title is fitting
A sight to behold

Your Answer: _____

3. You see us both together

Taking shape as one
Mothers, sisters, daughters,
Skin kissed by the sun

We may seem the same
But the point, you will be missing
As the title says,
Our strength is in our opposition

Your Answer: _____

4. Fabric grass,
Quilted sky
Ceramic zapatos
Painted white

A story of movement
And change
Creating a new home
In nuevo terrain

Your Answer: _____

5. We stand
Aligned
With our palms extended
Arms intertwined

As ropes dangle
With dripped paint
We are entangled
In a similar fate

Your Answer: _____

6. Cyan, azure,
sapphire, teal
This hand knitted wool
Makes the drops appear real

With splashes of red
In every other drop
How many differences
Can you spot?

Your Answer: _____

WRITE IT OUT

Intersectionality expresses diverse stories that unite the diaspora. The following words reflect major themes and takeaways of this exhibit. Choose 5 words to include in a poem or short story of your own. Feel free to use any grammatically correct version of the words.

1. Vulnerable
2. Community
3. Culture
4. Myth
5. Religion
6. Memory
7. Politics
8. Colorful
9. Pattern
10. Family
11. Movement
12. Loss
13. Justice
14. Ritual
15. Freedom

[illegible]

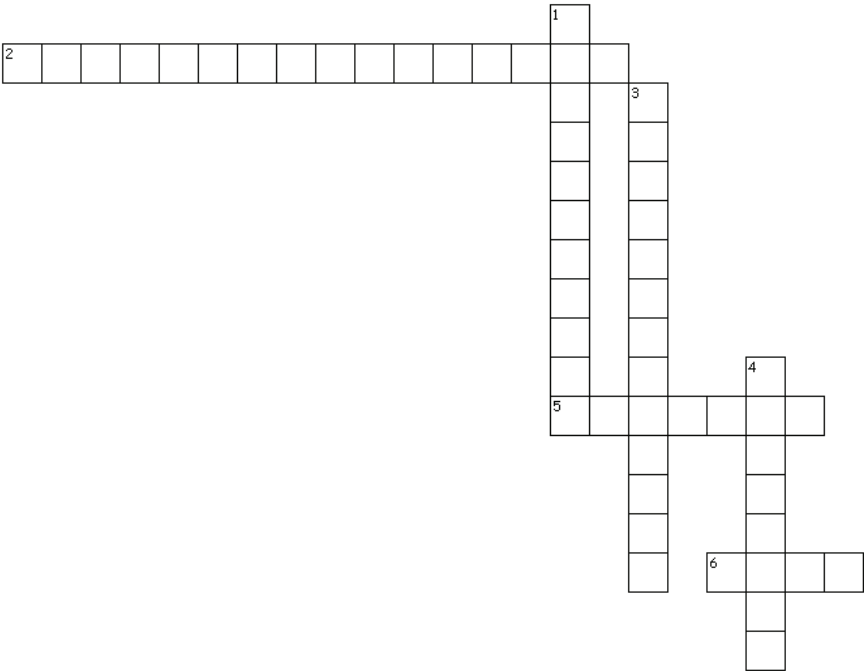
[illegible]

A collection of colorful, teardrop-shaped knitted ornaments hanging from thin blue threads. The ornaments are in various colors including blue, green, white, and grey, some with red stitching details. They are arranged in a dense cluster, hanging against a blurred background of a window or glass partition.

INTERSECTIONALITY CROSSWORD PUZZLE

Use the clues below to solve the crossword puzzle by entering the title of the artwork (without spaces) in the squares provided.

Answers are on page 11.



ACROSS

- 2. This piece is huge, with distressed rope and wood.
- 5. Tagged tea bags in a vast ocean.
- 6. A white inverted dome of mixed fibers, representing the womb.

DOWN

- 1. Wool and linen create a beautiful green brick illusion.
- 3. Tiny ceramic hands reaching out for freedom beyond the bars.
- 4. A soft video of beautiful nature in the background, you see hands moving in a detailed fashion.

DRAW AN ART PIECE

Draw a picture of your favorite piece from the exhibition.

ANSWER KEY

Riddle Poems

1. Do not be attached to detachment, 2018 Juan Ernesto Requena
2. A Radiant Revolution I, II, and III, 2018 Stephanie Woods
3. Janusian Things, 2018 Jared McGriff
4. Lo Que (no) Llegaron, 2015 Juan Erman Gonzalez
5. Shroud, 2019 Aisha Tandiwe Bell
6. Every Drop Counts, 2018 Evelyn Politzer

Intersectionality Crossword Puzzle

1. A Ray of Light - Wool and linen create a beautiful green brick illusion.
2. Growth of Industry - This piece is huge, with distressed rope and wood.
3. Land of the Free - Tiny ceramic hands reaching out for freedom beyond the bars.
4. Toli Toli - A soft video of beautiful nature in the background, you see hands moving in a detailed fashion.
5. The Drop - Tagged tea bags in a vast ocean
6. Void - A white inverted dome of mixed fibers, representing the womb.



Scan me with your phone to
learn more about the exhibition.



Harvey B. Gantt Center for
African-American Arts+Culture
551 S. Tryon Street, Charlotte, NC 28202
Office: 704.547.3700 | gsa@ganttcenter.org
ganttcenter.org

Get Social With Us! Connect with the Gantt Center
[@hbganttcenter](https://twitter.com/hbganttcenter)

